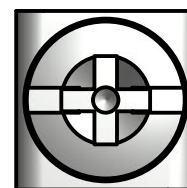
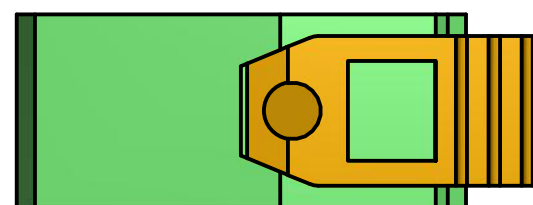



RJ-45 Jack
Top Entry,
Shielded: Brass, Nickel plate



Ground lug
6/32 x 1/4L Screw
0.31" square surface
Brass, Nickel plate



Conductor cross section AWG min.24
Conductor cross section AWG max.10
Conductor cross section min.0.2 mm²
Conductor cross section max.6 mm²
Stripping length 12 mm
Rated surge voltage (III/3)8 kV

DRAWN Juan Lizarazo	31/05/2015			
CHECKED				
QA		Entube QE		
MFG		SIZE C	DWG NO	REV
APPROVED		SCALE	SHEET 1 OF 1	